



Custom Metal Plate Laser Cutting Service Yellow Painted SPCC Sheet Metal Fabrication with Stamping and Bending Process

Our Product Introduction

Basic Information

- Place of Origin: China
- Brand Name: RIYI
- Certification: CCC CE
- Model Number: RY8000
- Minimum Order Quantity: 10pcs
- Price: 1-100
- Packaging Details: standard cartoon
- Delivery Time: 5-15days
- Payment Terms: T/T
- Supply Ability: 50000



Product Specification

- Acceptable: OEM/ODM
- Design: Customized
- Drawing: 2D +3D Drawing/ Scan Samples
- Processing Method: CNC Turning, CNC Milling, CNC Grinding, Etc.
- The Tolerance: $\pm 0.01\text{mm}$
- Keyword: Polishing Stainless Steel CNC Parts
- Oem Service: Acceptable
- Samples: Feasible
- Casting Process: Gravity Casting
- Surface Finish: Anodized, Powder Coating
- Cavity: Single
- Durability: Long-lasting
- Original Hardness: HRC35-42
- Diameter: 0.325inch, 0.13inch



More Images



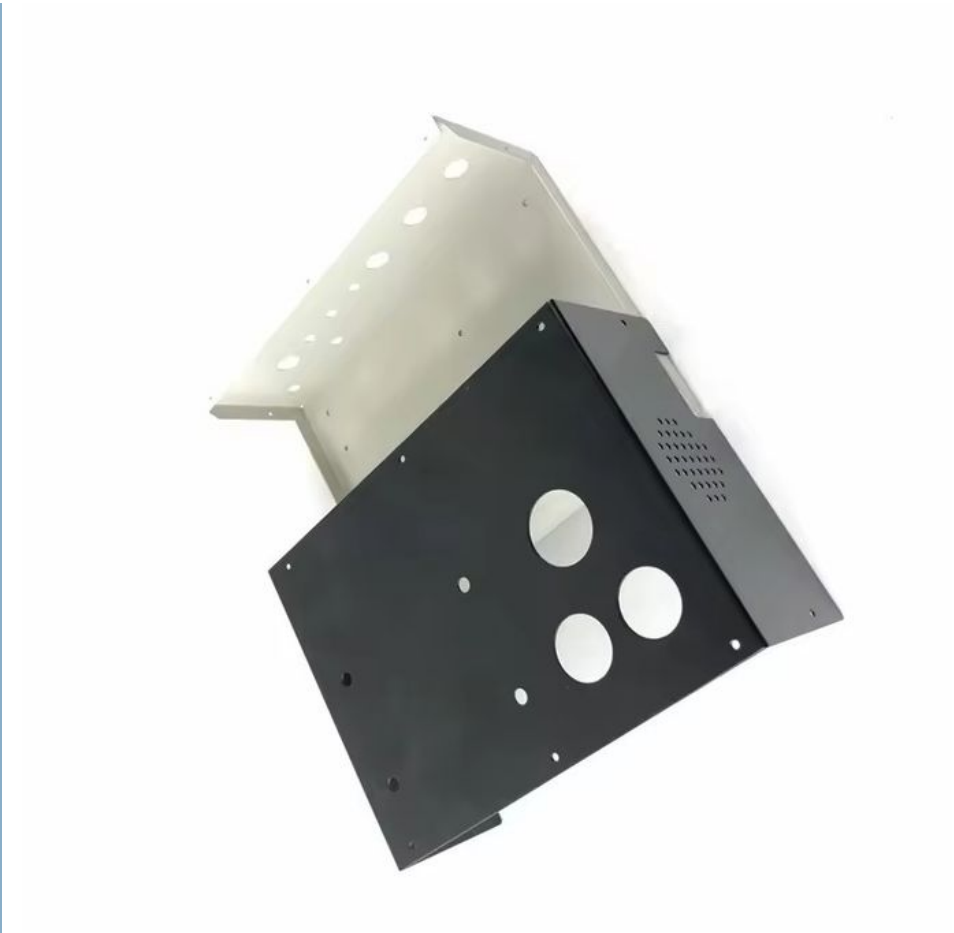
Product Description

Product Description:

Specification

item	Custom Metal Plate Laser Cutting Service Yellow Painted SPCC Sheet Metal Fabrication with Stamping and Bending Process
CNC Machining or Not	Cnc Machining
Material Capabilities	Aluminum, Brass, Bronze, Copper, Hardened Metals, Precious Metals, Stainless steel, Steel Alloys, As your request
Place of Origin	China
Model Number	Turning Machining
Keyword	cnc machining precision parts
Process	cnc turning /cnc machining/cnc milling /lathe turning
Material	stainless steel/aluminum/brasss
Surface treatment	Powder coating,electroplating,oxide,anodization
Drawing Format	STEP/3D/2D /PDF /Drawing
Tolerance	precise cnc parts 0.01-0.02mm
Equipment	cnc machining center/automatic lathe
Finish	Matt/anodized/Polish
Application	mechanical industry
Service	Customized OEM Services







Related Product:





Etch



Electroplate



PVD



Brushed



Silk Screen



Painting



Oxidation



Laser Carving

Company Profile:

About us:

Guangzhou Riye Metal Products Co., Ltd. is a professional manufacturer specializing in the production of enclosures, cabinets, racks, and various automated equipment sheet metal processing. The company is equipped with advanced technology and a full range of processing equipment, including various laser cutting machines, CNC machining centers, CNC bending machines, laser welding machines, and more. These meet production needs and ensure processing quality. The company's core values are "Focus on Quality, Efficient Production, and Dedicated Service." We adhere to customer requirements as the standard, cooperate hand in hand, and create a better future together!



Our customer:

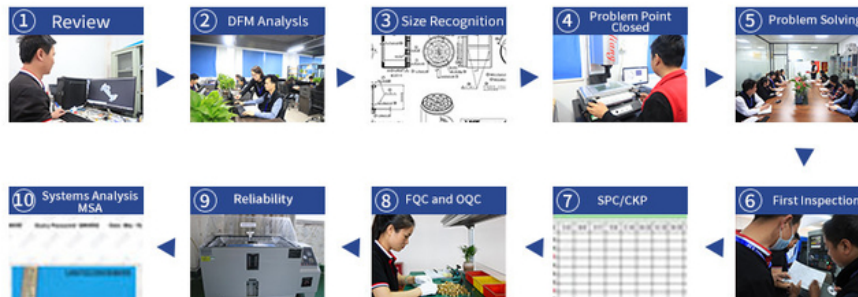


Certification:

Certifications



Production line:



Package:

We provide customized packaging with customer logos.

For fragile or heavy products, we customize reasonable and safe packaging methods according to needs



Use plastic box and and partitions to pack them



Pack in plastic box



Use pallet to stack the goods



Using bubble bag to pack



Plastic bag one by one



Plastic bag for single part with customized package



Packed by using paper



Packed with foam



Blister box to pack

Shipping:



RFQ:

Q1: What's kinds of information you need for quotation?

VMT: You can provide 2D/3D drawing or send your sample to our factory, then we can make according to your sample.

Q2: Can we sign NDA?

VMT: Sure. We never divulge customers' information to anyone else.

Q3: Do you provide sample?

VMT: Yes, we can provide you sample before mass order.

Q4: How can you ensure the quality?

VMT: We have professional QC department to guarantee the quality.

Q5: Delivery time

VMT: If in Stock: around 3 days after payment. Mass production: around 15~25 days after receipt of deposit (Accurate delivery time depends on specific items and quantities)

Q6: How about the transportation?

VMT: You can choose any mode of transportation you want, sea delivery, air delivery or door to door express.



Guangzhou Increasingly Metal Products Co., Ltd.



13316222186



gz-riyi.com

No. 6, Huangshan East Street, Langbian Village, Shiqi Town, Panyu District, Guangzhou City.